



PM&C Organisation Chart

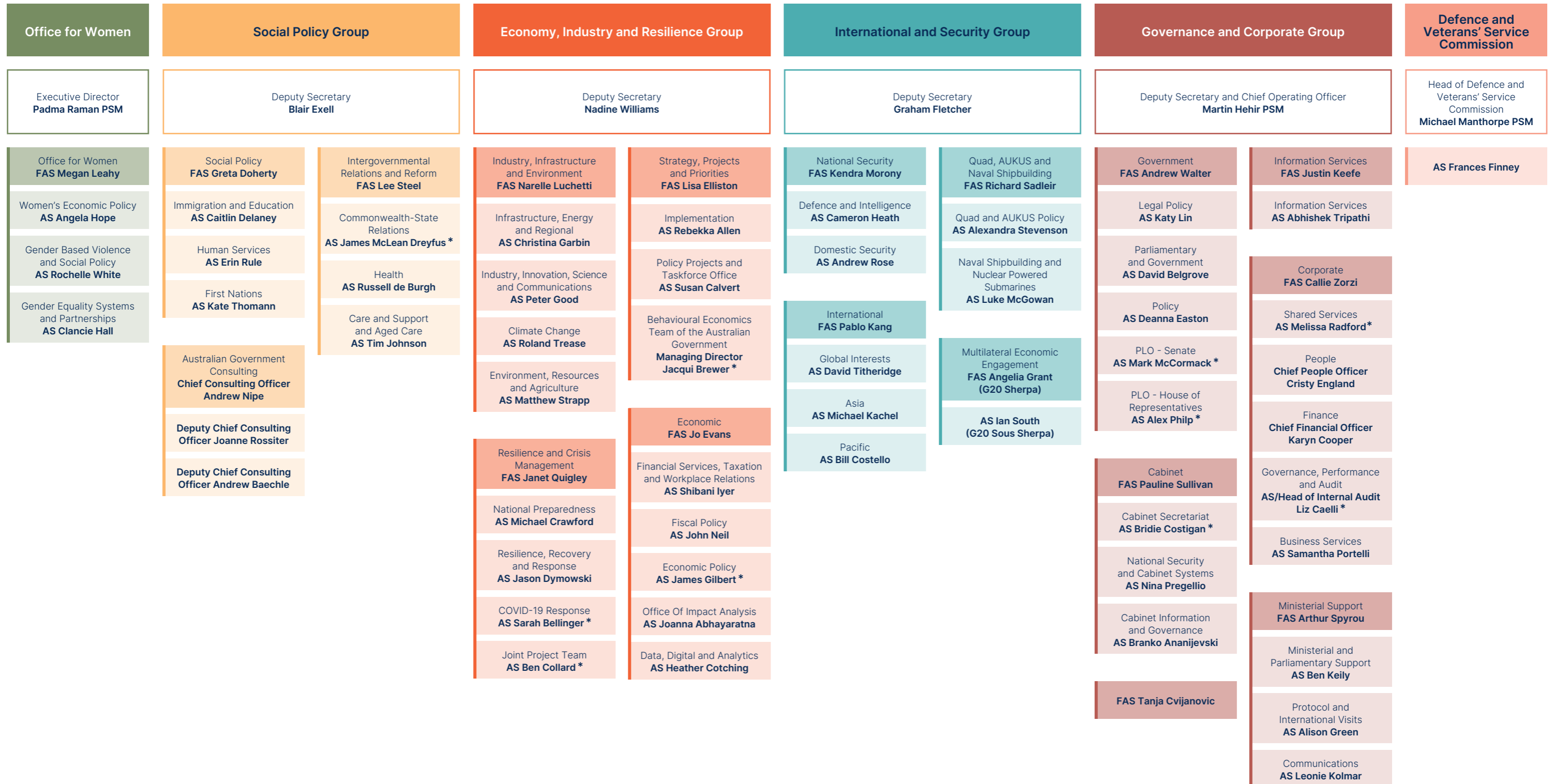
as at 21 February 2025

Secretary
Professor Glyn Davis AC ^

Chief of Staff
Joseph Solomon

Executive Assistant
Laura Florance***

Executive Adviser
Nicola Dobinson***



* Acting arrangement | ** Job sharing arrangement | *** Non-SES position | AS = Assistant Secretary | FAS = First Assistant Secretary | ^ Statutory appointment