



# PM&C Organisation Chart

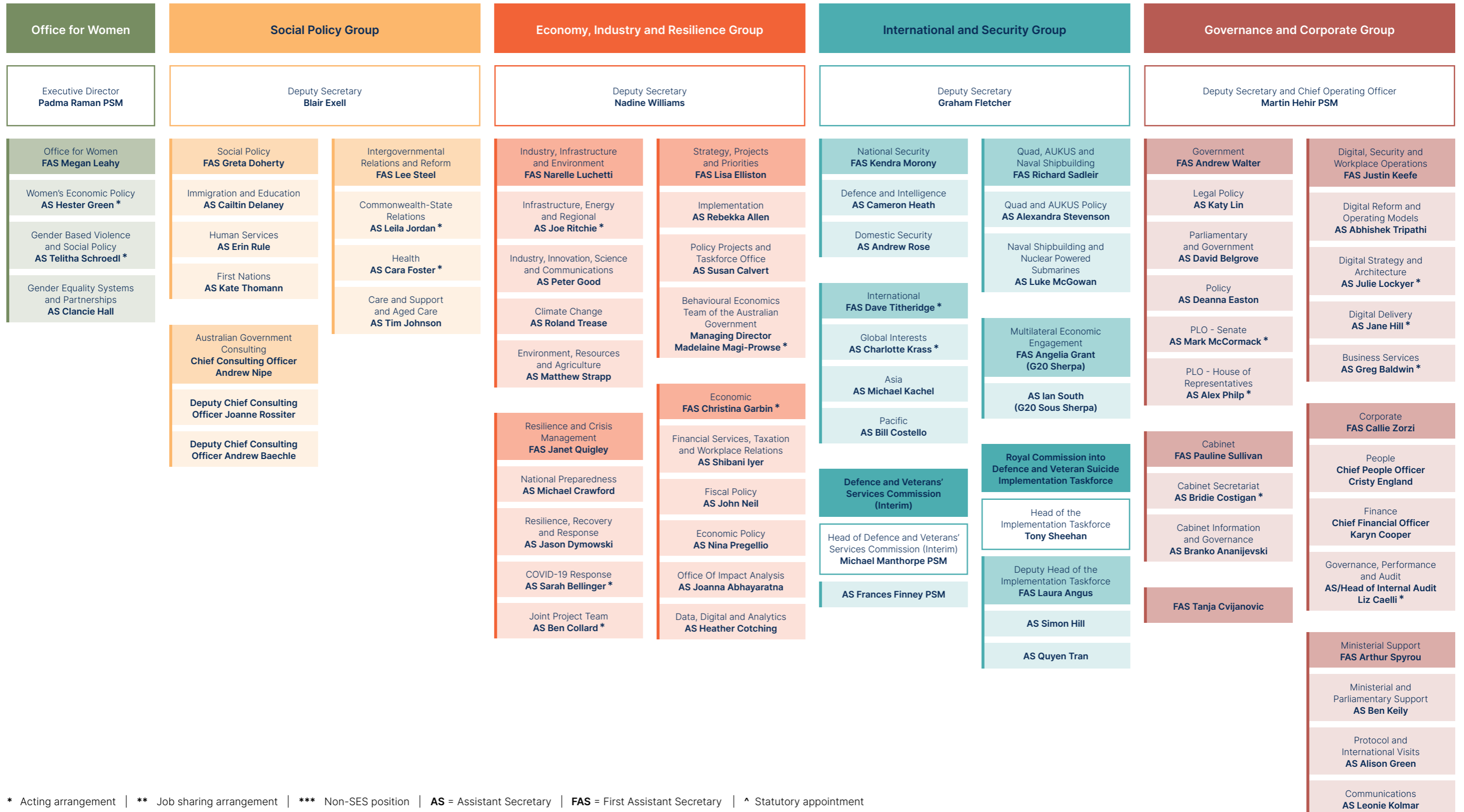
as at 27 March 2025

**Secretary**  
Professor Glyn Davis AC ^

Chief of Staff  
Joseph Solomon

Executive Assistant  
Laura Florance\*\*\*

Executive Adviser  
Nicola Dobinson\*\*\*



\* Acting arrangement | \*\* Job sharing arrangement | \*\*\* Non-SES position | AS = Assistant Secretary | FAS = First Assistant Secretary | ^ Statutory appointment